

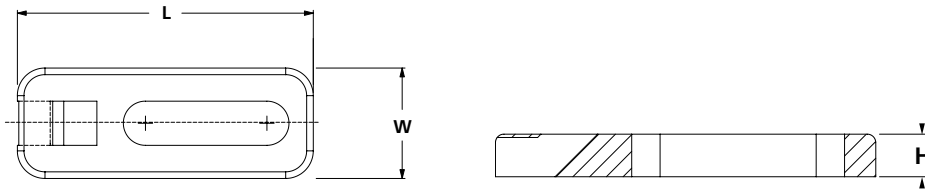
Screw Mounting Bases

Cable Tie Anchor Plates

HellermannTyton Cable Tie Anchor Plates are designed as a "stand-off" mount for perpendicular wire bundles. These mounts offer an elongated mounting hole for easier alignment of wire bundles. The mounts are installed quickly and easily by securing a single screw.

Features and Benefits

- Mount provides a "stand-off" for perpendicular bundles.
- Secures with a single screw providing quick installation.



PART NO.	TYPE	Cable Tie Series	Mounting Screw Type	Length (L) in. (mm)	Width (W) in. (mm)	Height (H) in. (mm)	Material	Color	Pkg. Qty.
CTAP110C2*	CTAP1	T18 - T50	#10 (M5) Screw	1.3 (34.0)	0.5 (12.7)	0.2 (3.8)	PA66	White	100
CTAP110M4*		T18 - T50	#10 (M5) Screw	1.3 (34.0)	0.5 (12.7)	0.2 (3.8)	PA66	White	1000
CTAP10C2*		T18 - T50	#10 (M5) Screw	1.3 (34.0)	0.5 (12.7)	0.2 (3.8)	PA66	Black	100
CTAP10M4*		T18 - T50	#10 (M5) Screw	1.3 (34.0)	0.5 (12.7)	0.2 (3.8)	PA66	Black	1000
CTAP210C2*	CTAP2	T18 - T50	#10 (M5) Screw	2.1 (54.1)	0.5 (12.7)	0.1 (3.5)	PA66	White	100

Dimensions are approximate and subject to technical changes. Use Part No. for ordering and Type for specification purposes.

*This product meets UL standards. Please see appendix for specific file numbers.



Please note! Not all products listed on this page may have this approval. Please check our website for latest approvals.